

Pitts Elastic and Disarticulation Protocols



Class II Dive II, Deep Overbite
and Retroclined Incisors

Pitts21[®]



VISIT US ONLINE



@ocorthodontics



@OC_Orthodontics



@ocorthodontics



@ocorthodontics

oc-orthodontics.com

Active Early Protocols

- Retroclined Incisors
- Deep Overbite
- Moderate Crowding
- Class II Div II
- 50% Deep Bite
- Upper Crowding
- Mid-Lines Coincidence
- Good SAP & VID
- Narrow Arches

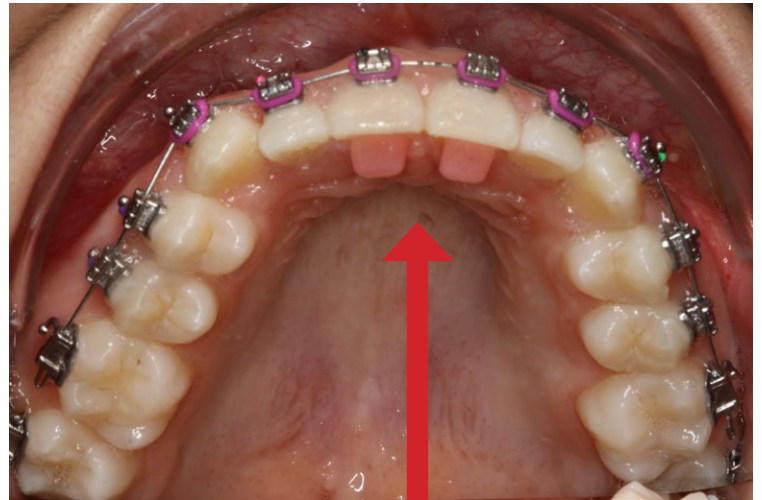


Initial Photo

Patient of Dr. Tom Pitts



SAP/VID Bracket Position

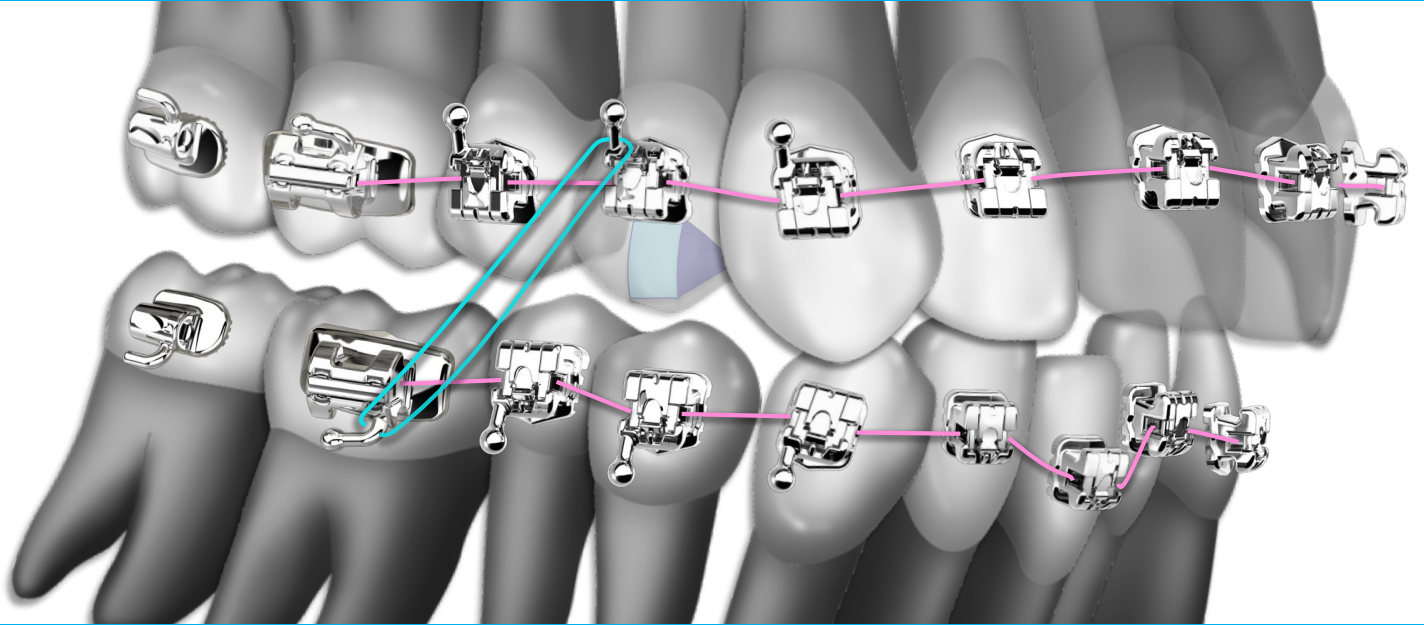


Disarticulation to encourage posterior extrusion.

At the present time we mostly start the disarticulation for deep bites on the maxillary first bicuspids with a ramp to encourage forward position of the mandible as in a functional appliance. Then we later shift back to the centrals for this disarticulation and eventually remove the bite turbos towards the end of treatment to finish the occlusion in centric relation.

FIRST APPOINTMENT

"Shorty" Light Class II with Upper & Lower .014 NiTi ILSE (Immediate Light Short Elastics)



3/16" (5mm) Water

2.5oz.
(70.9g)
LIGHT



WAKEBOARDING

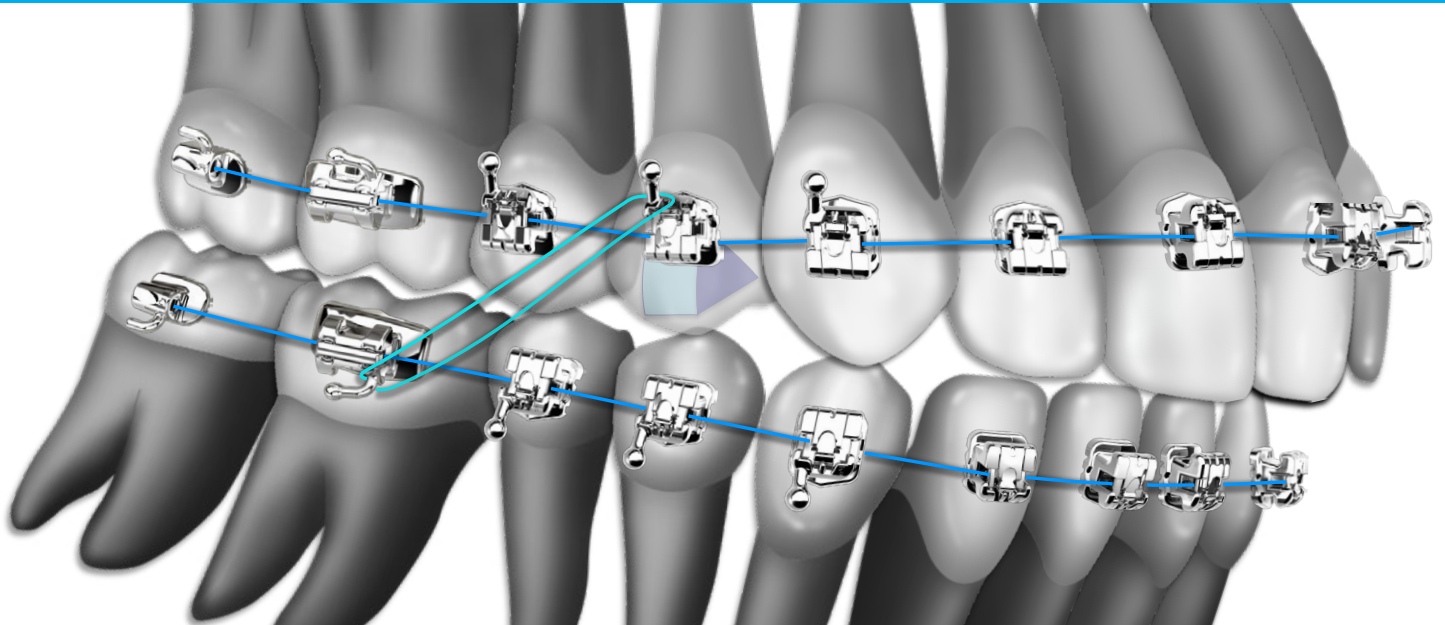
Latex	60.63.843.00025
Colored Latex	60.63.843.31025
Non-Latex	60.63.943.00025

Always start with 3/16, 2.5 oz.

Wire	Elastics	Direction	oz / gm	Duration
.014 Thermal Activated Nickel Titanium	"Shorty" Class II	L6 - U4	2.5/70	24 hr.

"Shorty" Medium Class II with .018 x .018 Super Soft NiTi

VID/VIP "Ramped" in Class II



3/16" (5mm) Water

3.5oz.
(99.2g)
MEDIUM

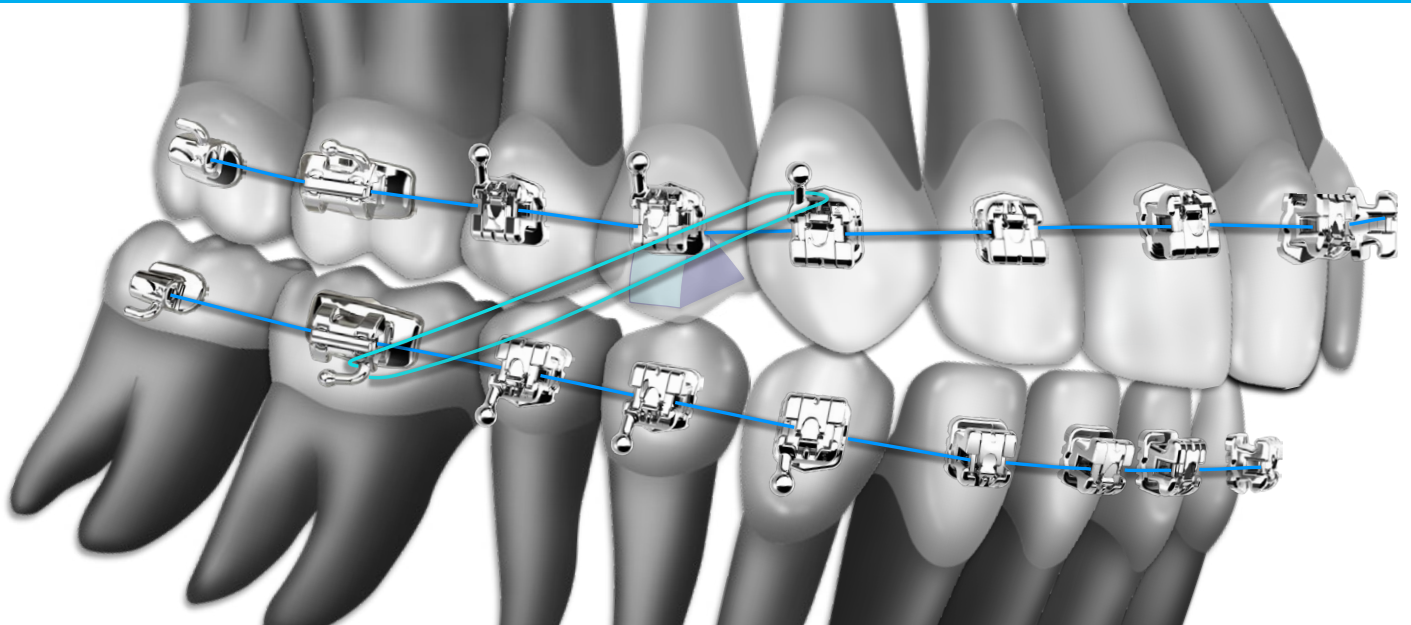


CANOEING

Latex	60.63.844.00035
Colored Latex	60.63.844.31035
Non-Latex	60.63.944.00035

Wire	Elastics	Direction	oz / gm	Duration
.018 x .018 Ultra Soft Nickel Titanium	"Shorty" Class II	L6 - U4	3.5/100	24 hr.

"Shorty" Medium Class II with .020 x .020 NiTi



3/16" (5mm) Water

3.5oz.
(99.2g)
MEDIUM



CANOEING

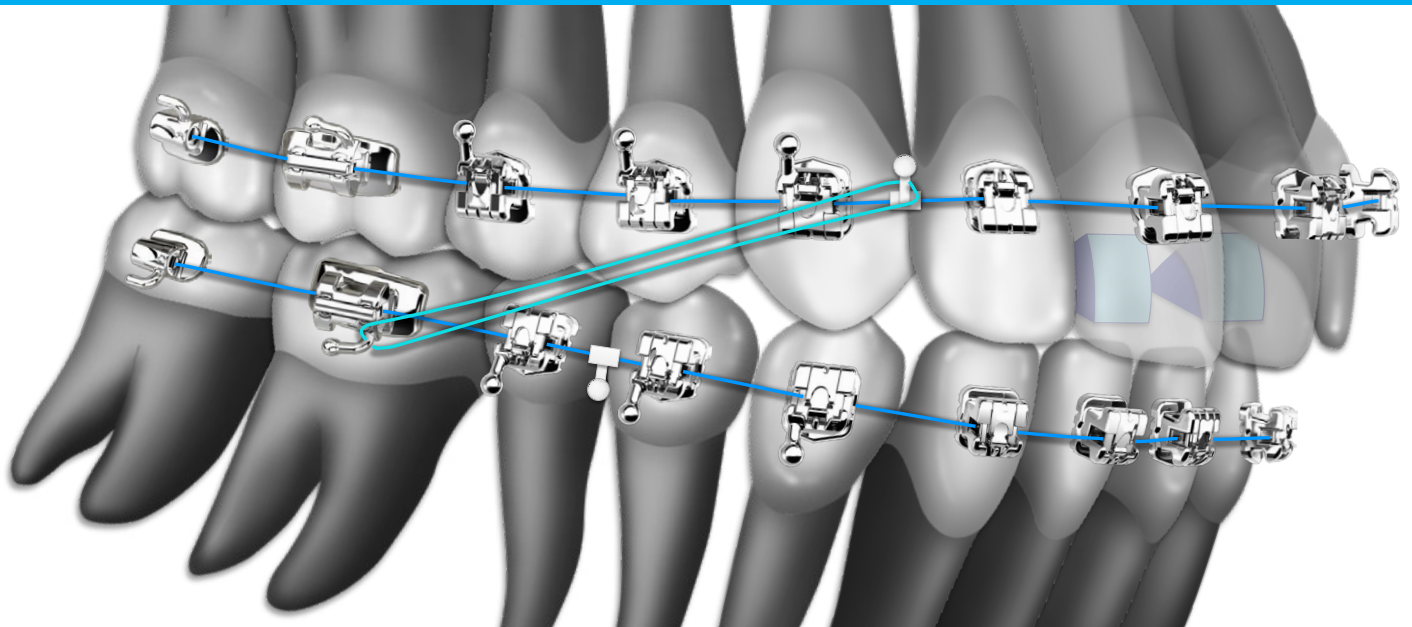
Latex	60.63.844.00035
Colored Latex	60.63.844.31035
Non-Latex	60.63.944.00035

Wire	Elastics	Direction	oz / gm	Duration
.018 x .018 Ultra Soft Nickel Titanium	"Shorty" Class II	L6 - U3	3.5/100	24 hr.

Class II 3/16". Heavy 4.5 oz. Lower 6 to Upper Hook

For Stubborn Class II

Shift bite turbos to the upper 1's



3/16" (5mm)

4.5oz.
(127.6g)
HEAVY



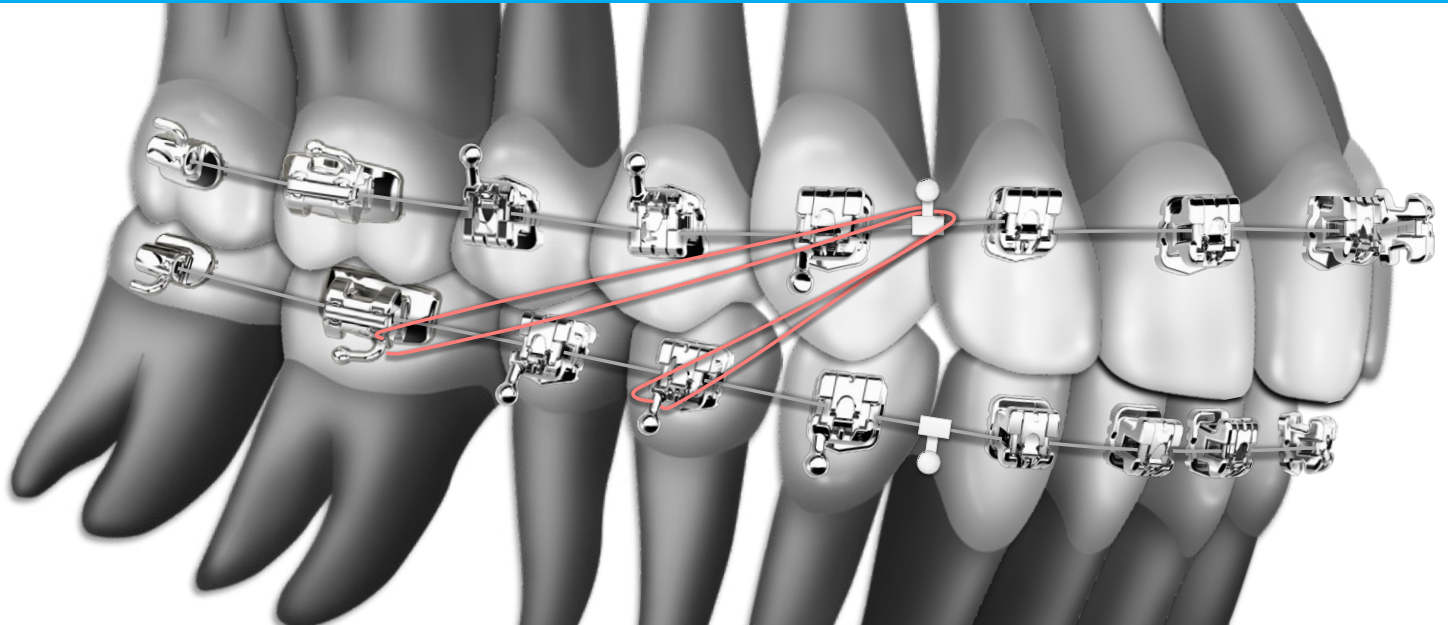
Latex	60.63.845.00045
Colored Latex	60.63.845.31045
Non-Latex	60.63.945.00045

Wire	Elastics	Direction	oz / gm	Duration
Upper & Lower .019 x .019 Stainless Steel	"Shorty" Class II	L6-UHK	4.5/100	24 hr.

Adjust Disarticulation & Take Bite Turbos Out of Occlusion if Necessary

Adjust for CO=CR

Over-Correct As Necessary



5/16" (8mm) Racing

<p>3.5oz. (99.2g) MEDIUM</p>	
Latex	60.63.864.00035
Colored Latex	60.63.864.31035
Non-Latex	60.63.964.00035

5/16" (8mm) Racing

<p>2.5oz. (70.9g) LIGHT</p>	
Latex	60.63.863.00025
Colored Latex	60.63.863.31025
Non-Latex	60.63.963.00025

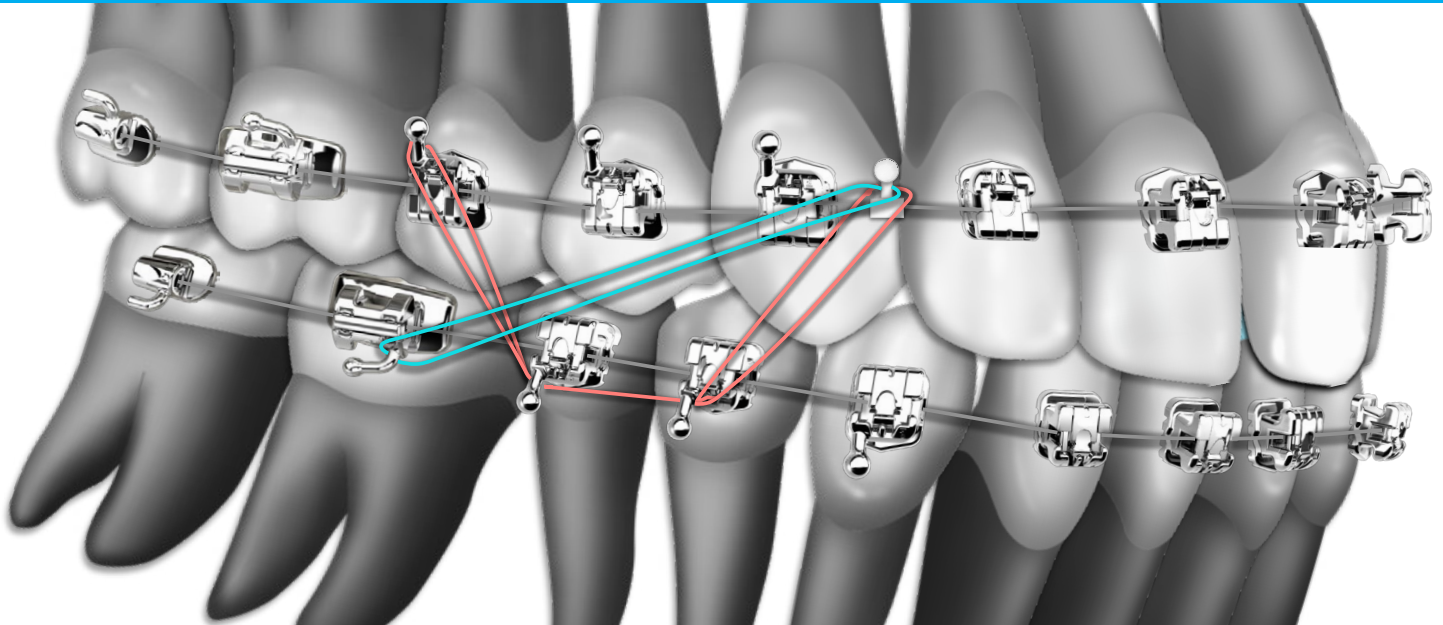
Wire	Elastics	Direction	oz / gm	Duration
Upper & Lower .019 x .019 Stainless Steel	Class II "V"	L6-HK-L4	3.5/100	24 hr.

NOTE: Dr. Pitts never uses more than 2.5 oz elastics in the anterior region.

Finishing Elastics to Sock in Occlusion

Down and Under

Continue Very Light Class II to Avoid Rebound



3/16" (5mm) Water

2.5oz.
(70.9g)
LIGHT

WAKEBOARDING

Latex	60.63.843.00025
Colored Latex	60.63.843.31025
Non-Latex	60.63.943.00025

5/16" (8mm) Racing

2.5oz.
(70.9g)
LIGHT

BMX RACING

Latex	60.63.863.00025
Colored Latex	60.63.863.31025
Non-Latex	60.63.963.00025

Wire	Elastics	Direction	oz / gm	Duration
Upper & Lower .019 x .019 Stainless Steel	"Shorty" Class II	L6-UHk	2.5/70	24 hr.
	Down and Under	U6 - Lower 4,5 - UHk	2.5/70	PM

Notes for Mild Class II Using Elastics

- If no lower anterior crowding or lower anterior proclination, begin the case with short light Class II elastics.
- If lower anterior crowding or proclination, begin the case with short light Class III elastics from the lingual of the upper 5 to labial of lower 3. This will help the development of width and development of arch space (this is aided by the part time rainbow elastics).
- To help in minimizing lower anterior proclination in Class II elastics we gain anchorage by taking the lower wire through the lower 7's which is a better anchor.
- When using .019 x .019 stainless steel, Dr. Pitts widens the archform incrementally more than the broad form.

VID (Vertical Incisor Display)

Is the sister to SAP (smile arc protection)



100% of Incisor Display on Full Smile
Decreases with Age
Youthful
Tooth Length
Lip animation

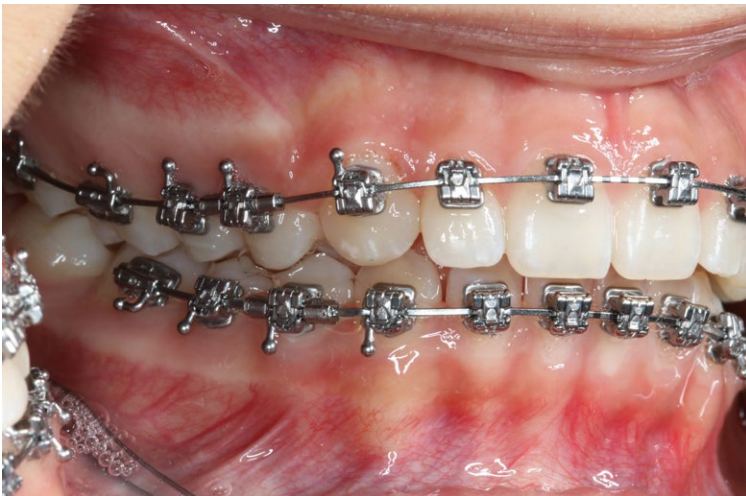


VID (Vertical Incisor Display)

SAP (Smile Arc Position)

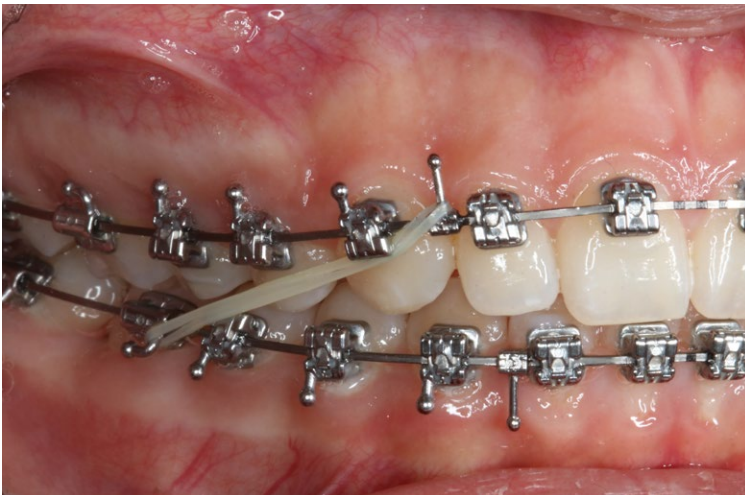
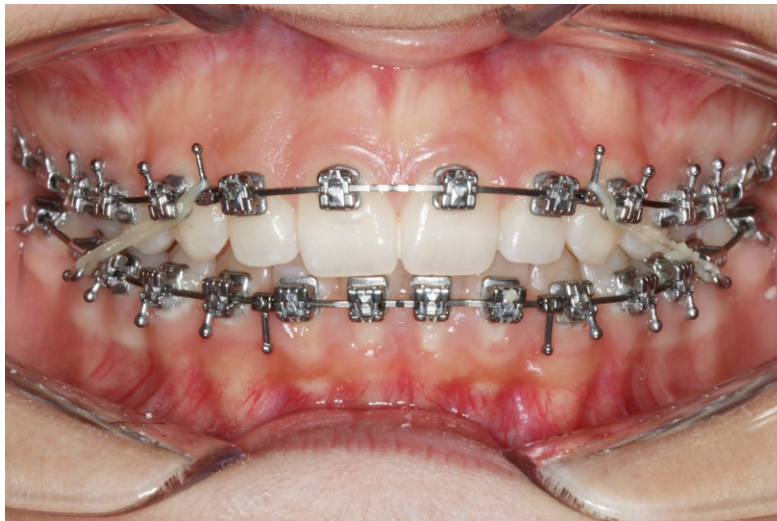
Mirrors lower lip position

6 Weeks

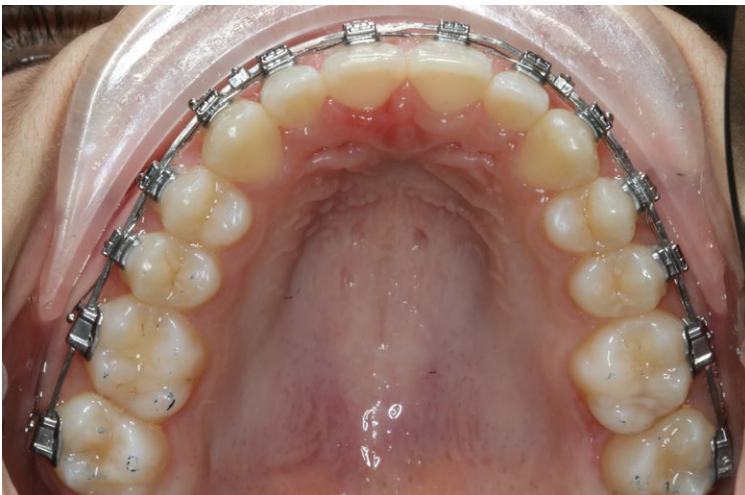
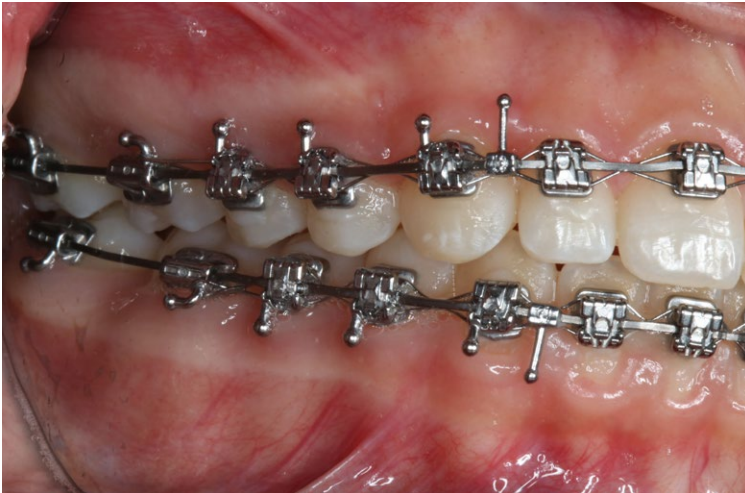


4 Months

ILSE off AW hooks



8 Months



Strategies Demonstrated

- SAP Bracket Position
- ILSE - In Groups
- Forward Disarticulation - Posterior Extrusion to Open the Bite and Level the Arches
- Pitts Broad Archforms
- Over Correction
- Finalizing of the Occlusion

9 Months - FINAL

Before



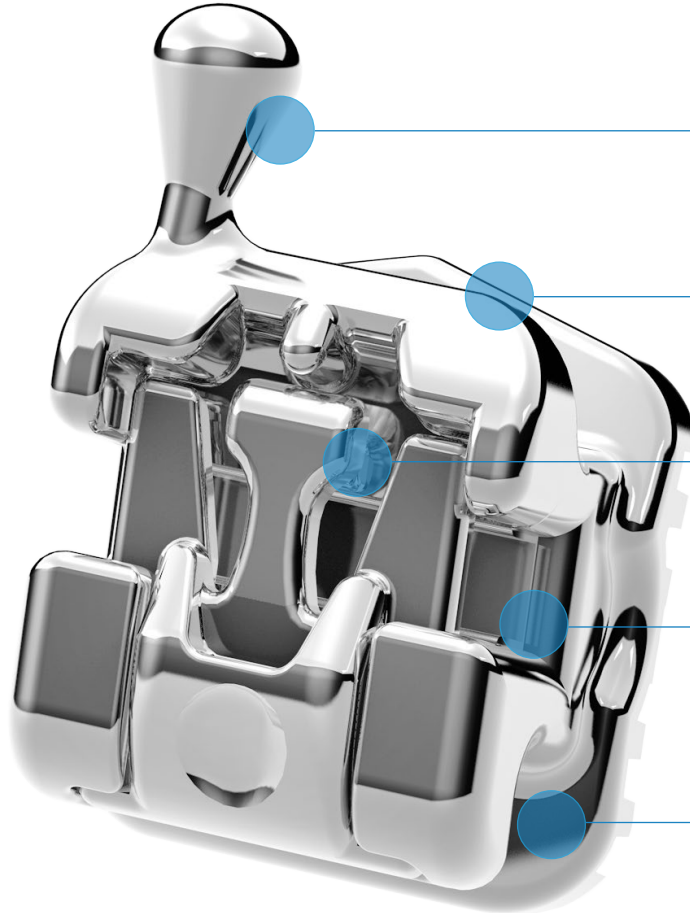
Final



9 Months

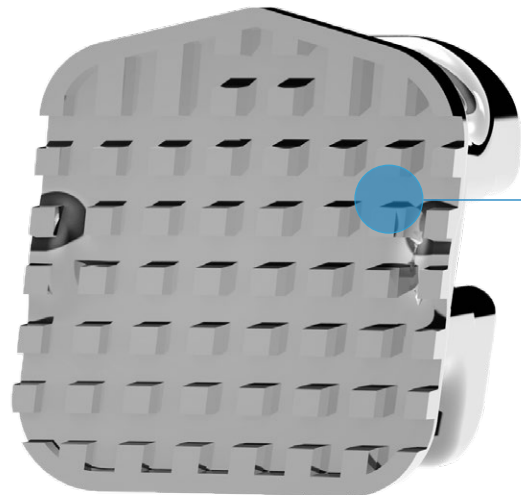
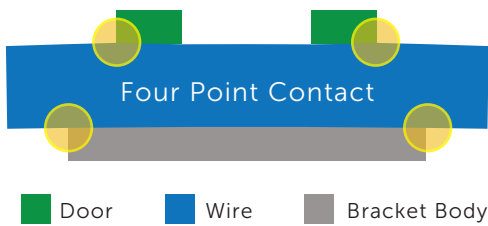


Pitts21[®]



The Science of the Pitts21 Door

Designed for enhanced stability and control.



Integrated Hooks

An available option on the 3's, 4's and 5's for your convenience at no extra charge.

Smooth, Rounded Edges

Ensures that your patients have the most comfortable experience.

Unique Door Design

The unique sliding door is designed to create improved control of rotation and torque, while providing enhanced structural stability.

.021 Precision Slot Depth

The reduced slot depth is designed to provide a tighter pairing between the wire and the bracket leading to earlier engagement, improved torque, and better control.

Large Under Tie-Wing Clearance

Supports early elastics, ligatures, metal ligatures, and power chain.

Base Lock Plus

One piece base/bracket aims to create an optimum pad-to-tooth fit and bond strength resulting in fewer broken brackets and fewer debonding issues.


Square Wire Finishing

Provides you with unparalleled 3D control earlier and throughout treatment.

Pitts21[®]



VISIT US ONLINE

 @ocorthodontics

 @OC_Orthodontics

 @ocorthodontics

 @ocorthodontics

oc-orthodontics.com